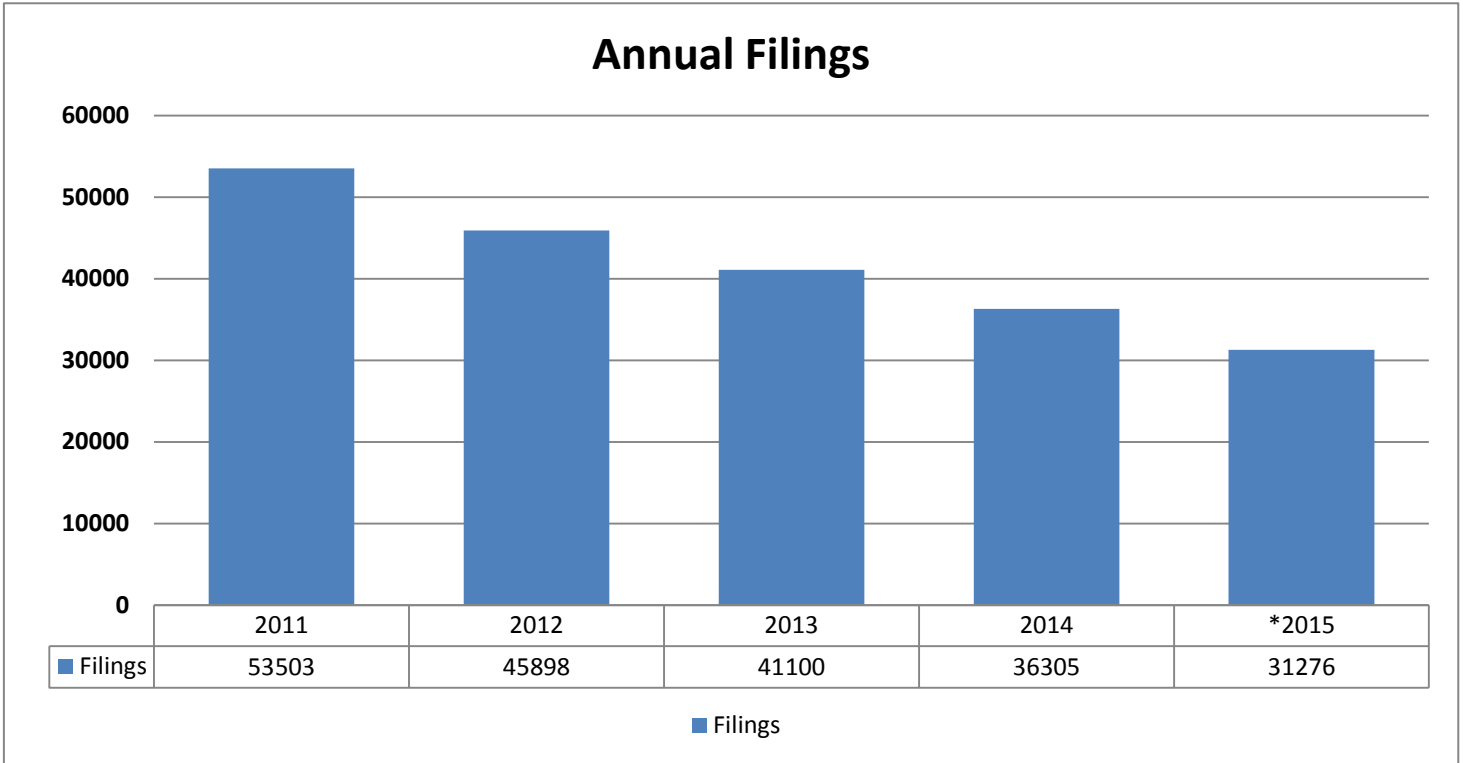
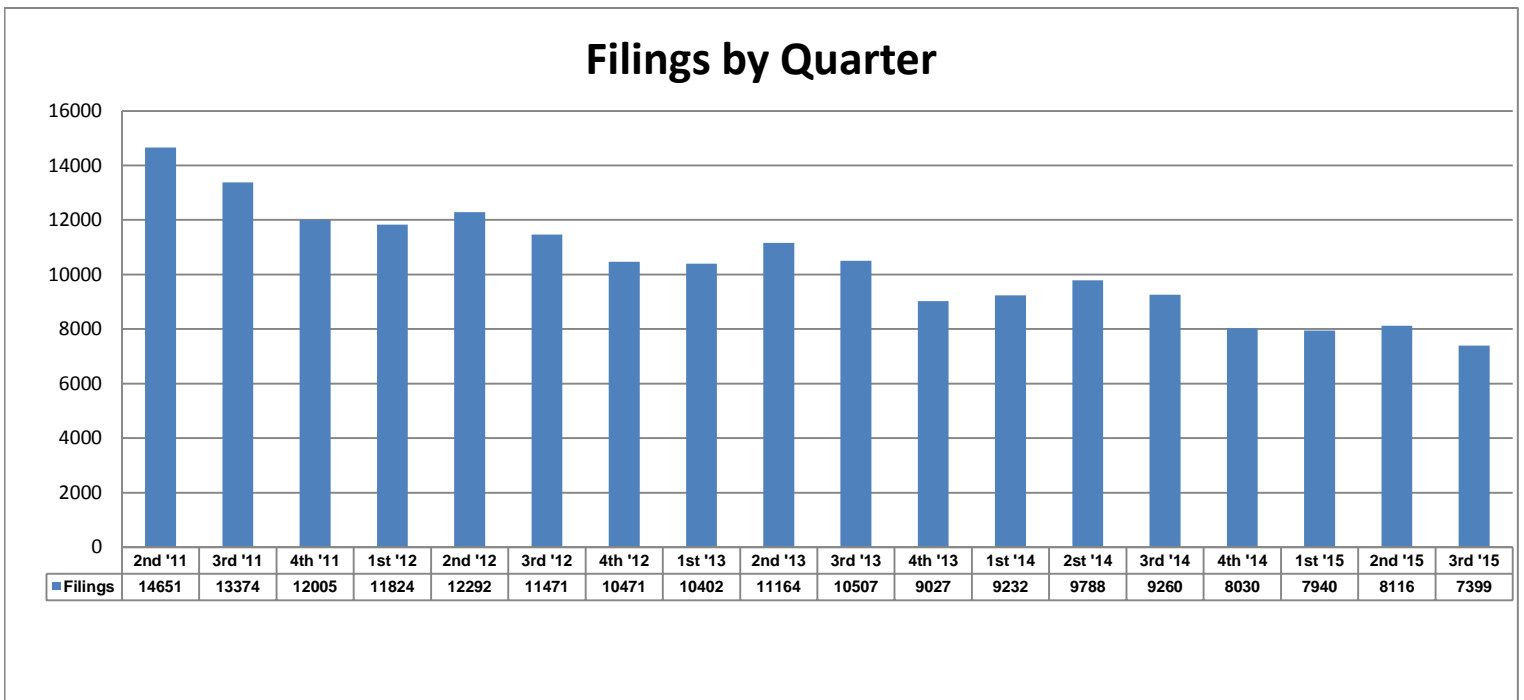


**United States Bankruptcy Court - Middle District of Florida**  
**Updated October 8, 2015 Meeting Data and Information**  
**Statistics as of September 30, 2015**

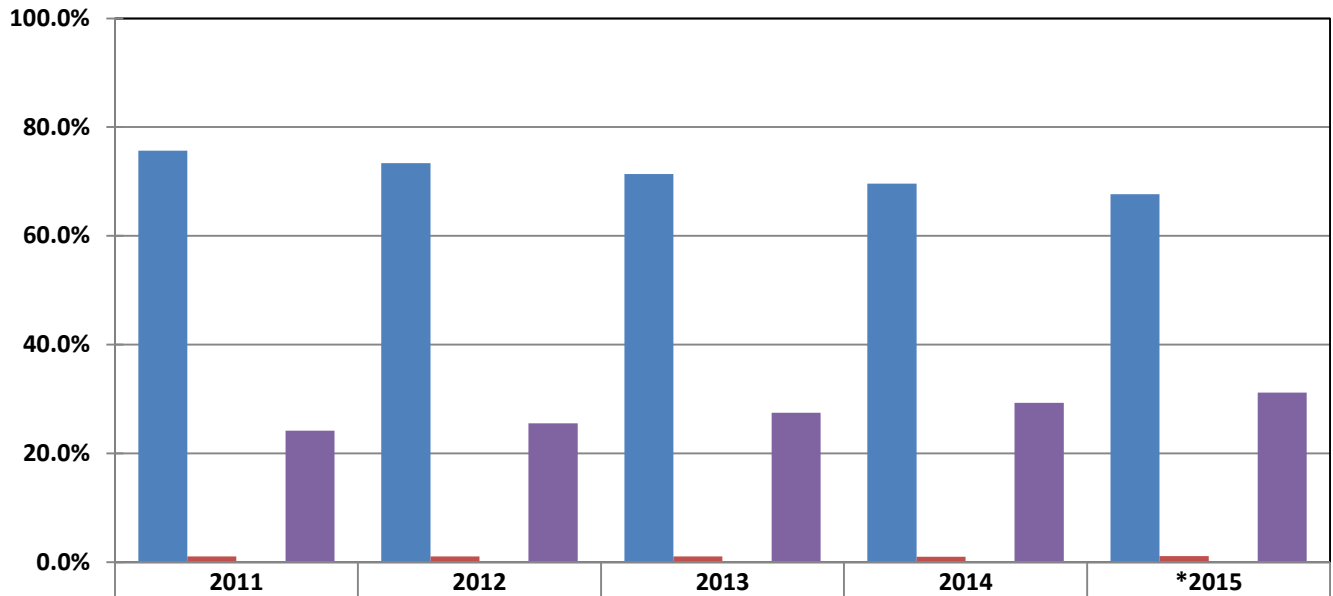


Year	Annual Filings	vs. 2011	vs. Prior Yr.
2011	53503		
2012	45898	-14%	-14%
2013	41100	-23%	-10%
2014	36305	-32%	-12%
*2015	31276	-42%	-14%

\* Projected Filing Statistics

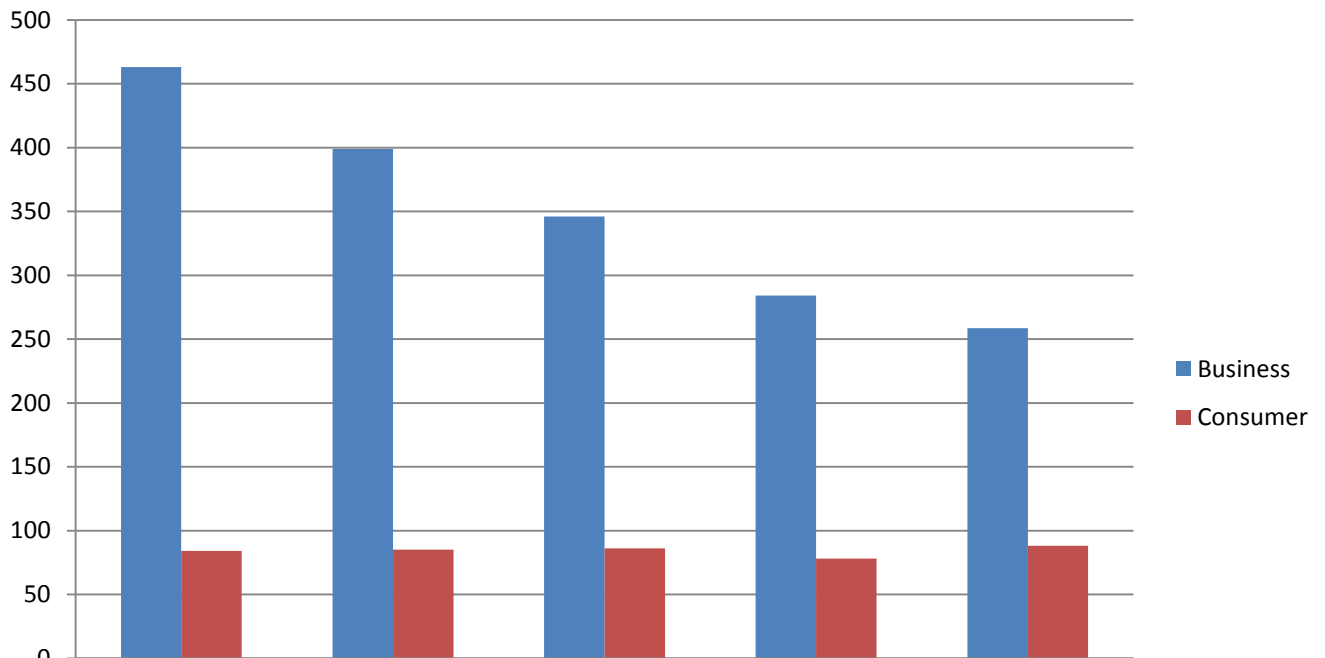


## Filings by % of Chapter Type



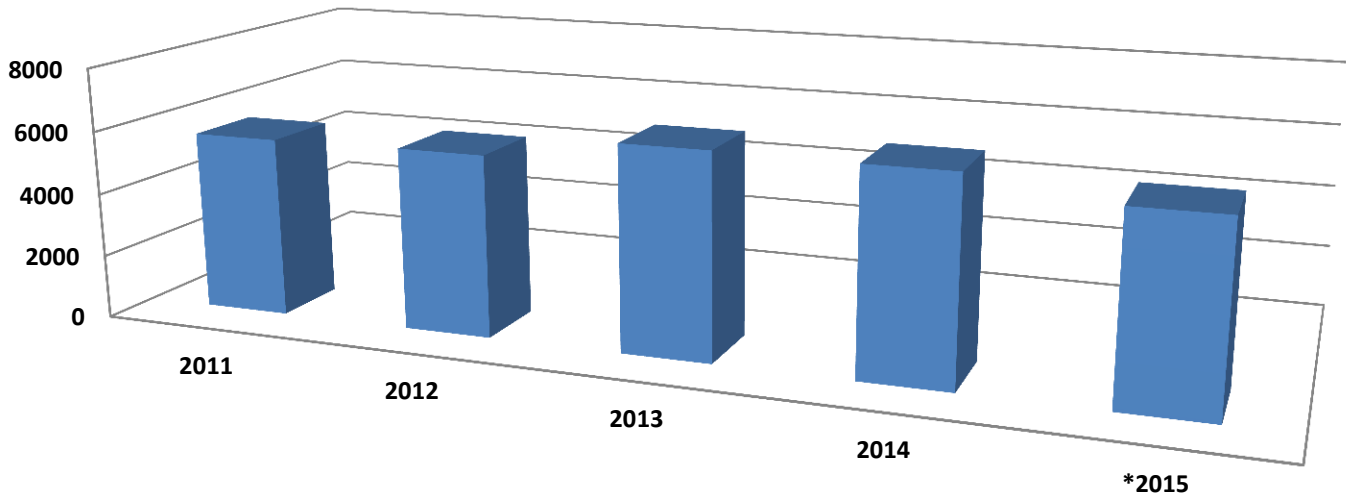
	2011	2012	2013	2014	*2015
Chapter 7	75.7%	73.4%	71.4%	69.6%	67.6%
Chapter 11	1.0%	1.1%	1.1%	1.0%	1.1%
Chapter 12	0.0%	0.0%	0.0%	0.0%	0.0%
Chapter 13	24.2%	25.5%	27.5%	29.3%	31.2%

## Chapter 11 Filings



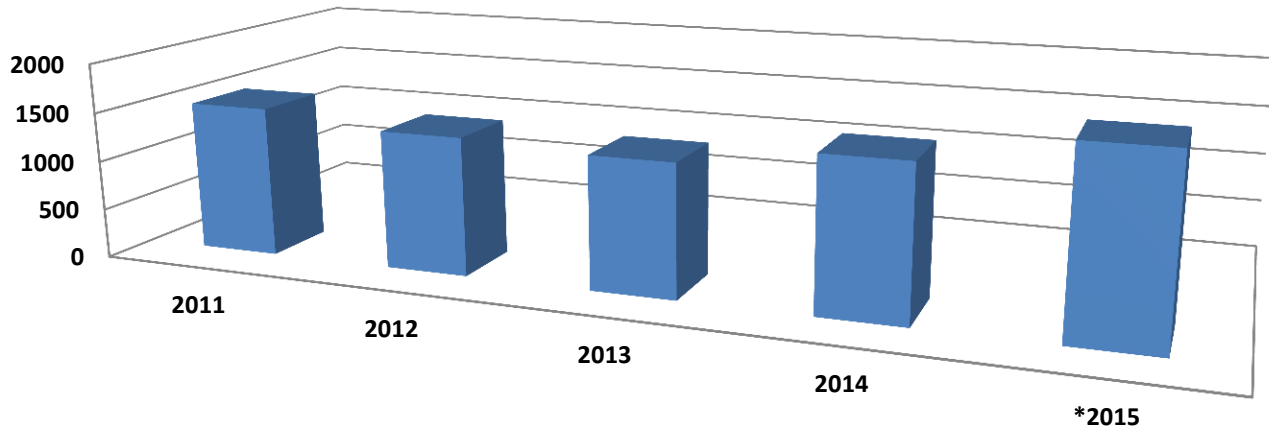
	2011	2012	2013	2014	*2015
Business	463	399	346	284	259
Consumer	84	85	86	78	88

## Pro Se Filings

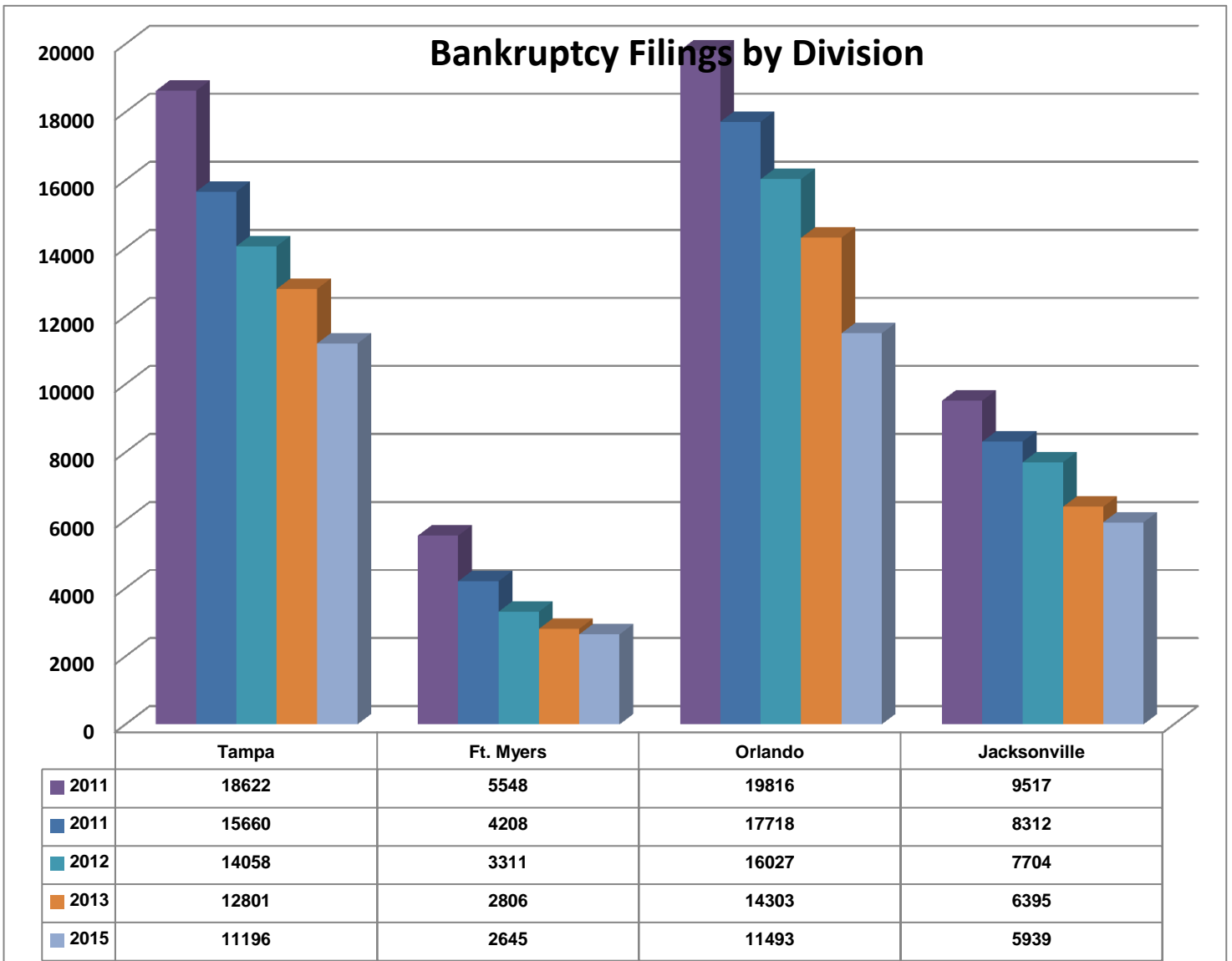


	2011	2012	2013	2014	*2015
■ Pro Se	5682	5737	6435	6387	5801
% of All Filings	11%	12%	16%	18%	19%

## In Forma Pauperis Filings



	2011	2012	2013	2014	*2015
■ IFP Granted	1524	1396	1334	1529	1819
% of All Filings	3%	3%	3%	4%	6%



Note: Previous quarterly reports incorrectly reflected total cases filed by including adversary proceedings. Order Granting IFP counts have been corrected to include approving language.